

# ALLIANCE SWAMP RIDER



**SWAMP RIDER**

MADE IN CANADA

PH:800-230-5431

[allianceswamprider.com](http://allianceswamprider.com)

**SALES \* SERVICE \* RENTALS**



Winnipeg, Manitoba, Canada  
[sales@allianceswamprider.com](mailto:sales@allianceswamprider.com)



Seats	6
Weight	2645lbs/1200kg
Fuel type	Diesel
Top speed (land)	20mph/32kph
Top speed (water)	3mph/5kph
Engine torque	75Hp
Fuel consumption	0.53GPH(2LPH) - 1.32GPH(5LPH)
<b>Load capacity</b>	
Water	1100lbs/500kg
Land	1550lbs/700kg
Grade Limit	35°
<b>Dimensions</b>	
Length	12,5ft/3827mm
Height	7.7ft/2346mm
Width	7.7ft/2350mm
Wheel base	7.9ft//2400mm
Ground clearance	1,57ft/480mm
Tires	54x23.6x21in 1370x600x533mm



# SR-V "MAX"

**STARTING AT** \$91,000 or \$306/Bi Weekly\*

\*Price Does Not Include Freight, Set-Up, Destination Charge, Tax, Fees or Licencing. .  
Price Subjesct to Change. Please Varyfy at Time of Order.



# SR-V "CABIN"

**STARTING AT \$82,500 or \$807/Bi Weekly**

\*Price Does Not Include Freight, Set-Up, Destination Charge, Tax, Fees, or License.  
Price Subject to Change: Please Verify Price at Time of Order.



Seats	2
Weight	2645lbs/1200kg
Fuel type	Diesel
Top speed (land)	20mph/32kph
Top speed (water)	3mph/5kph
Engine torque	75Hp
Fuel consumption	0.53GPH(2LPH) - 1.32GPH(5LPH)

## Load capacity

Water	1100lbs/500kg
Land	1550lbs/700kg
Grade Limit	35°

## Dimensions

Length	12,5ft/3827mm
Height	7.7ft/2346mm
Width	7.7ft/2350mm
Wheel base	7.9ft//2400mm
Ground clearance	1,57ft/480mm
Tires	54x23.6x21in 1370x600x533mm



Seats 2  
Weight 2465lbs/1100kg  
Fuel type Diesel  
Top speed (land) 20mph/32kph  
Top speed (water) 3mph/5kph  
Engine torque 75Hp  
Fuel consumption 0.53GPH(2LPH) -  
1.32GPH(5LPH)

#### Load capacity

Water 1100lbs/500kg  
Land 1550lbs/700kg  
Grade Limit 35°

#### Dimensions

Length 12,5ft/3827mm  
Height 7.7ft/2346mm  
Width 7.7ft/2350mm  
Wheel base 7.9ft/2400mm  
Ground clearance 1,57ft/480mm  
Tires 54x23.6x21in  
1370x600x533mm



# SR-V "ROPS"

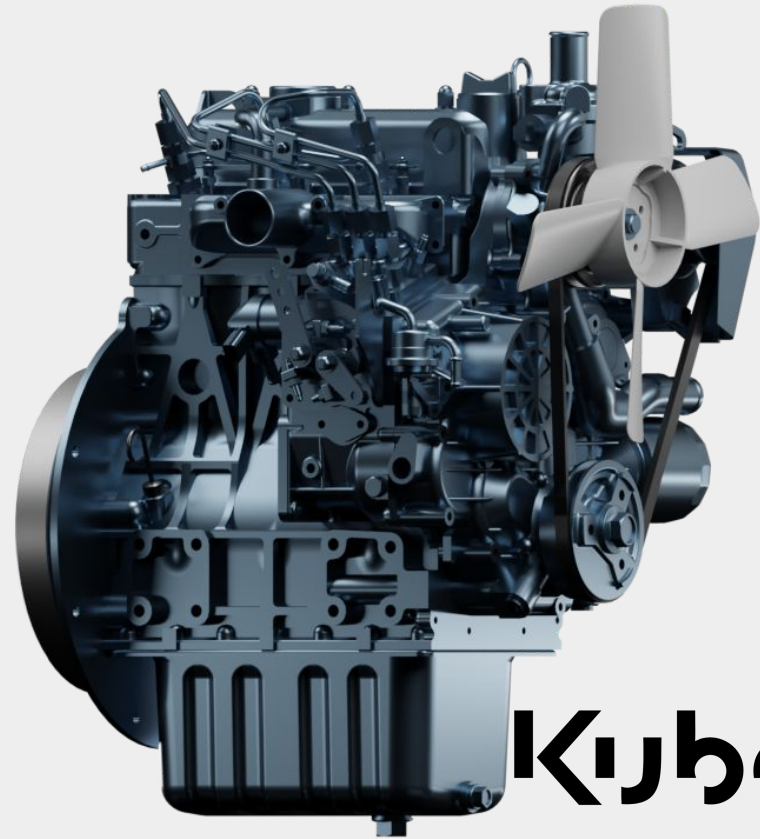
**STARTING AT** \$69,000 or \$663/Bi Weekly

\* Price Does Not Include Freight, Set-Up, Destination Charge, Tax, Fees or Licence.  
Price Subject To change. please Verify Price At Time of Order.



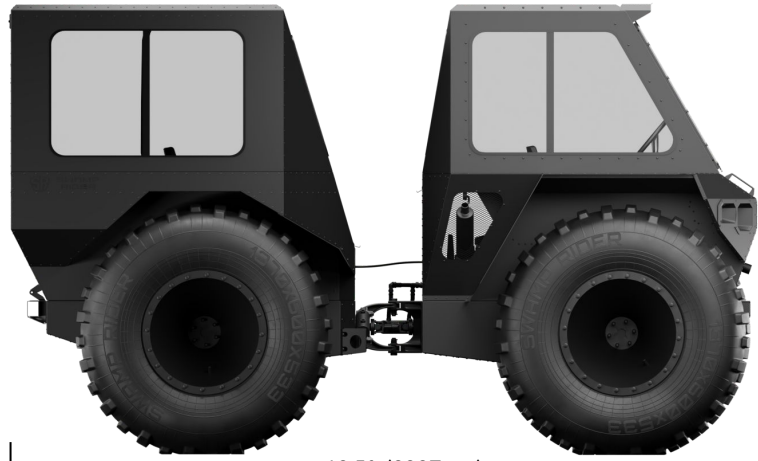
# ENGINE

Engine model	D1105-E4B
Emission regulation	EPA/CARB Tier 4 + EU Stage V
Type	Vertical, water cooled 4-cycle diesel engine
Cylinders	3
Bore and stroke mm (in)	78.0 x 78.4 (3.07 x 3.09)
Displacement L (cu.in)	1.123 (68.53)
Aspiration	Naturally aspirated
Aftertreatment	-
Rated output/speed* <sup>1</sup> kW(HP)/rpm	18.5 (24.8) / 3000
Maximum torque/speed Nm (lb-ft)/rpm	71.5 (52.7) / 2200
Combustion system	Indirect injection
Fuel system	In-line pump
Length x Width x Height (without aftertreatment unit)mm(in)	480 x 396 x 605 (18.9 x 15.6 x 23.8)
Dry weight kg (lb)	93 (205)

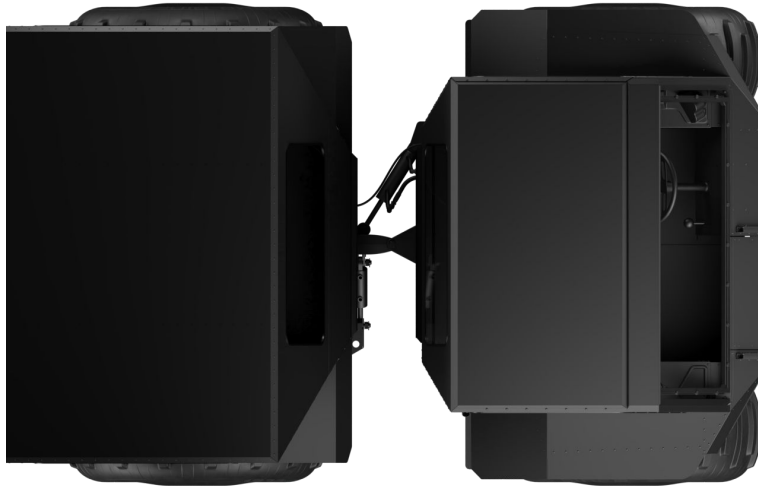


# Kubota

# SR-V "MAX"



12,5ft (3827mm)



7.9ft (2400mm)

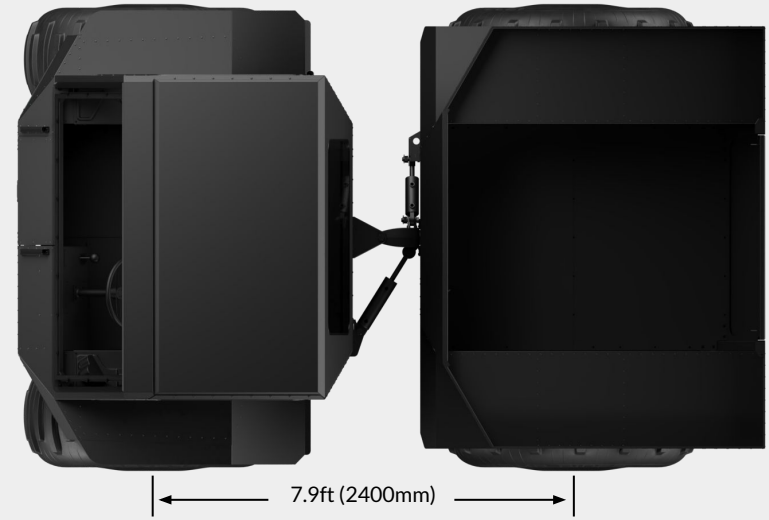
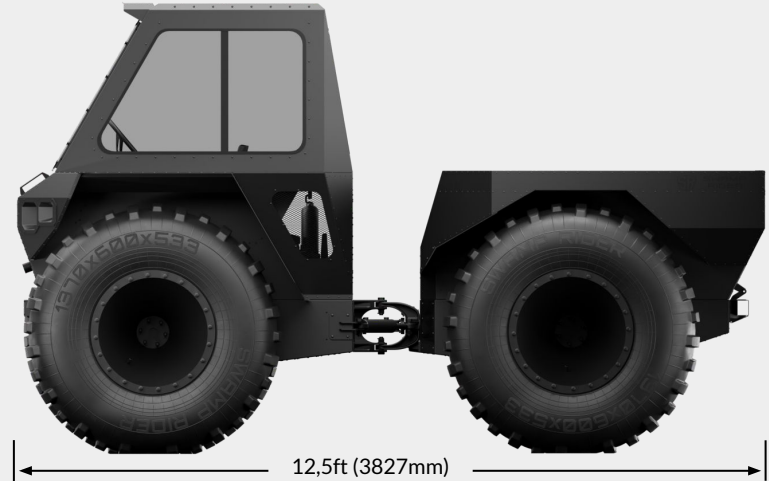


7.7ft (2346mm)

7.7ft (2350mm)



# SR-V "CABIN"





12,5ft (3827mm)



7.9ft (2400mm)

# SR-V "ROPS"

7.7ft (2346mm)



7.7ft (2350mm)

